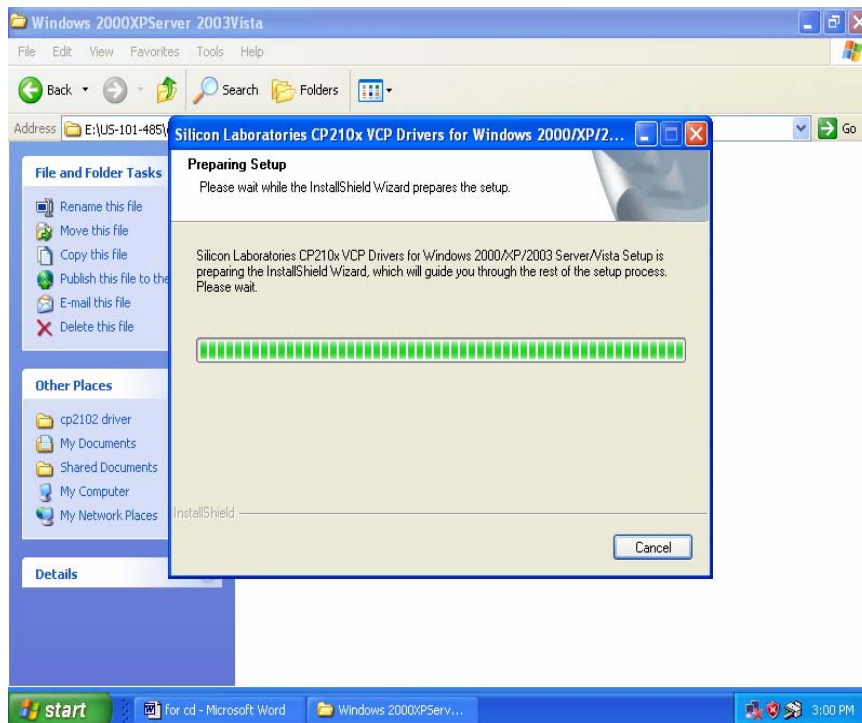


US-101-485 INSTALL

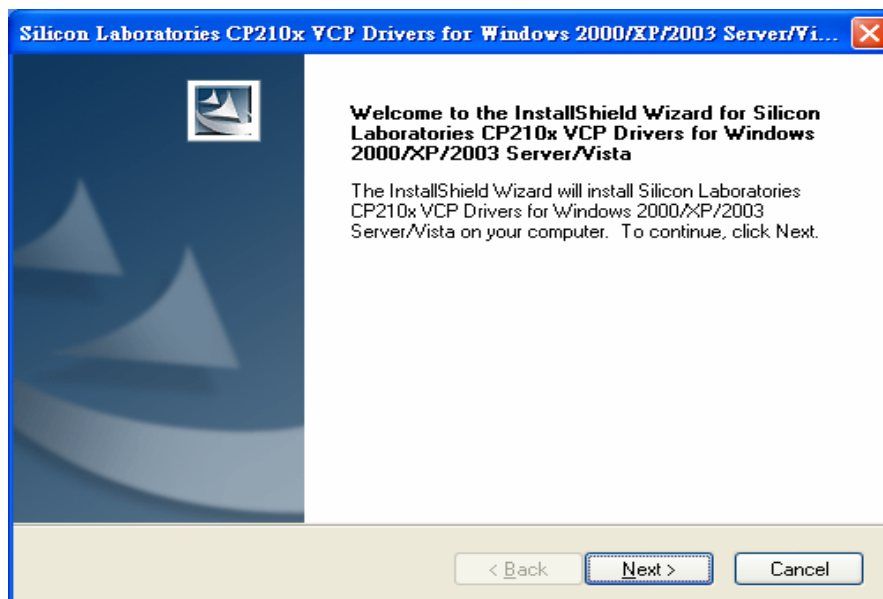
SETUP 1.(from Software)

1. Through CD-ROM find adaptable OS .

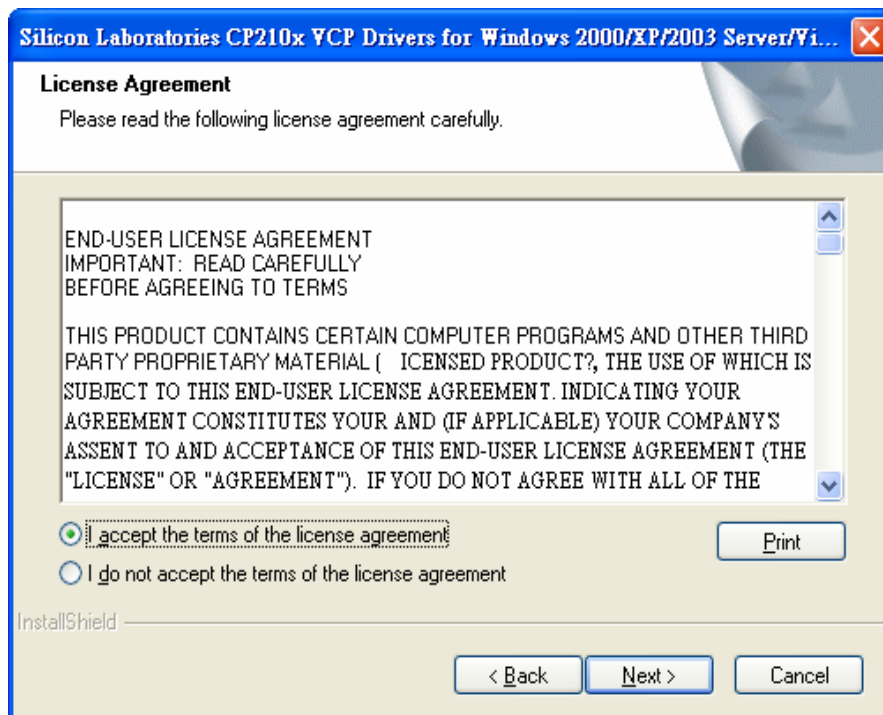
2. Install **CP210x_VCP_Win2K_XP_S2K3** software



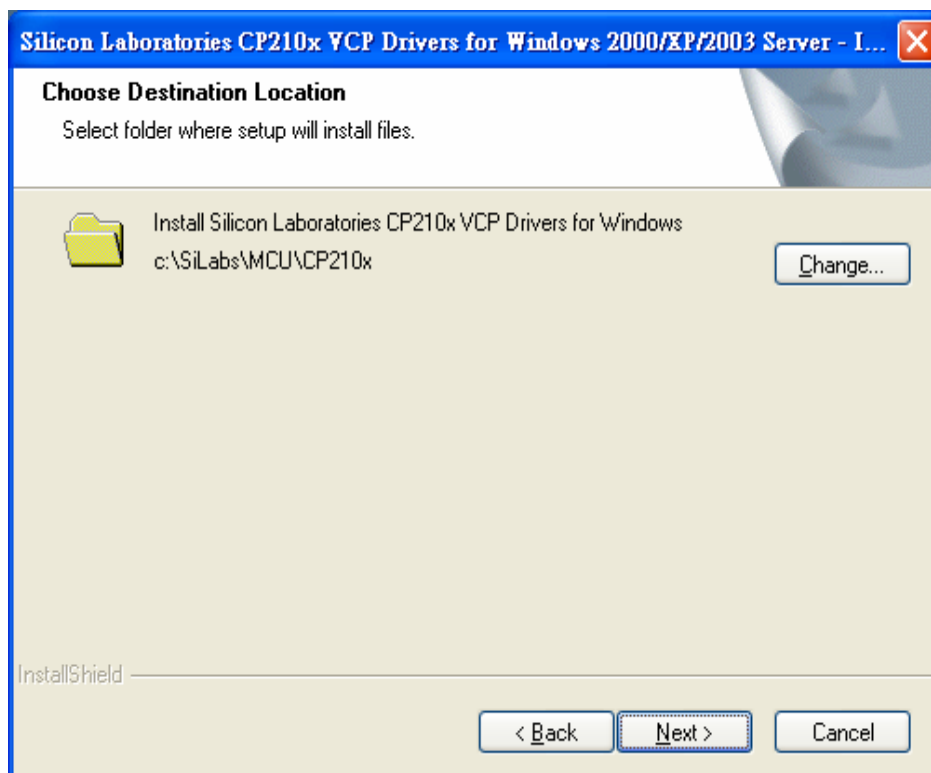
3. Choose **NEXT**"



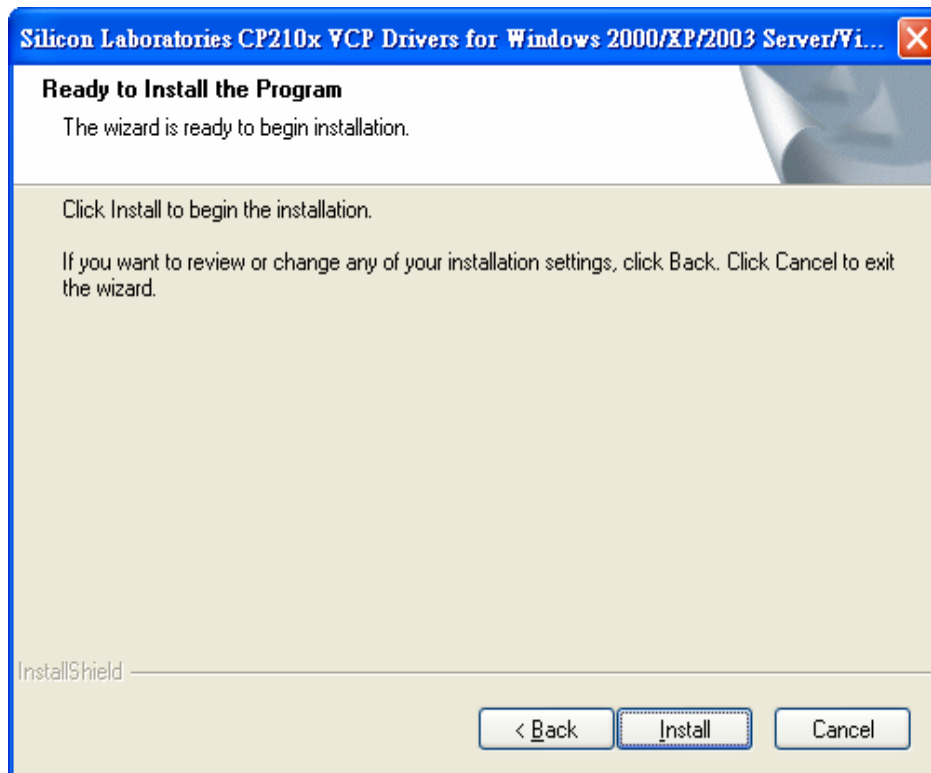
4. Choose "ACCEPT"



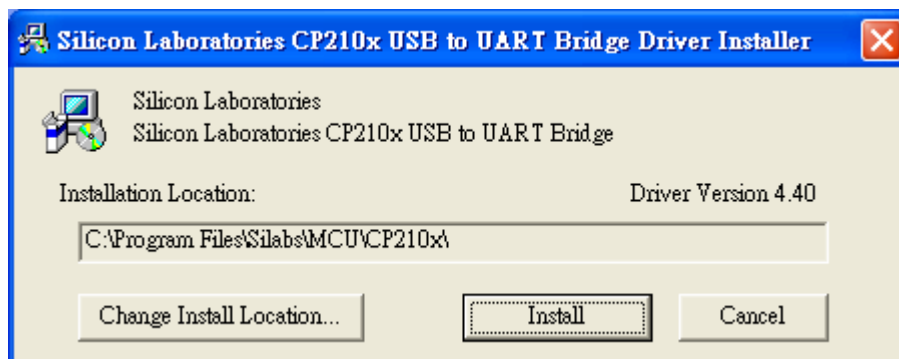
5. Choose destination location : (Initial value) then choose next step.



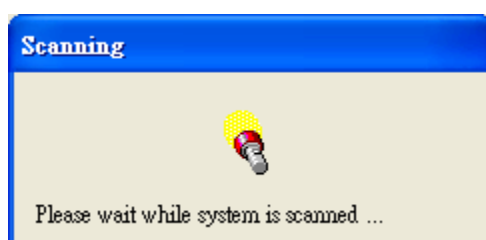
6. Choose "Install"



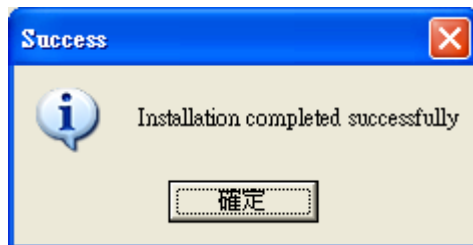
7. Choose "Install"



8. scanning



9. Installation completed successfully



10. Finish

